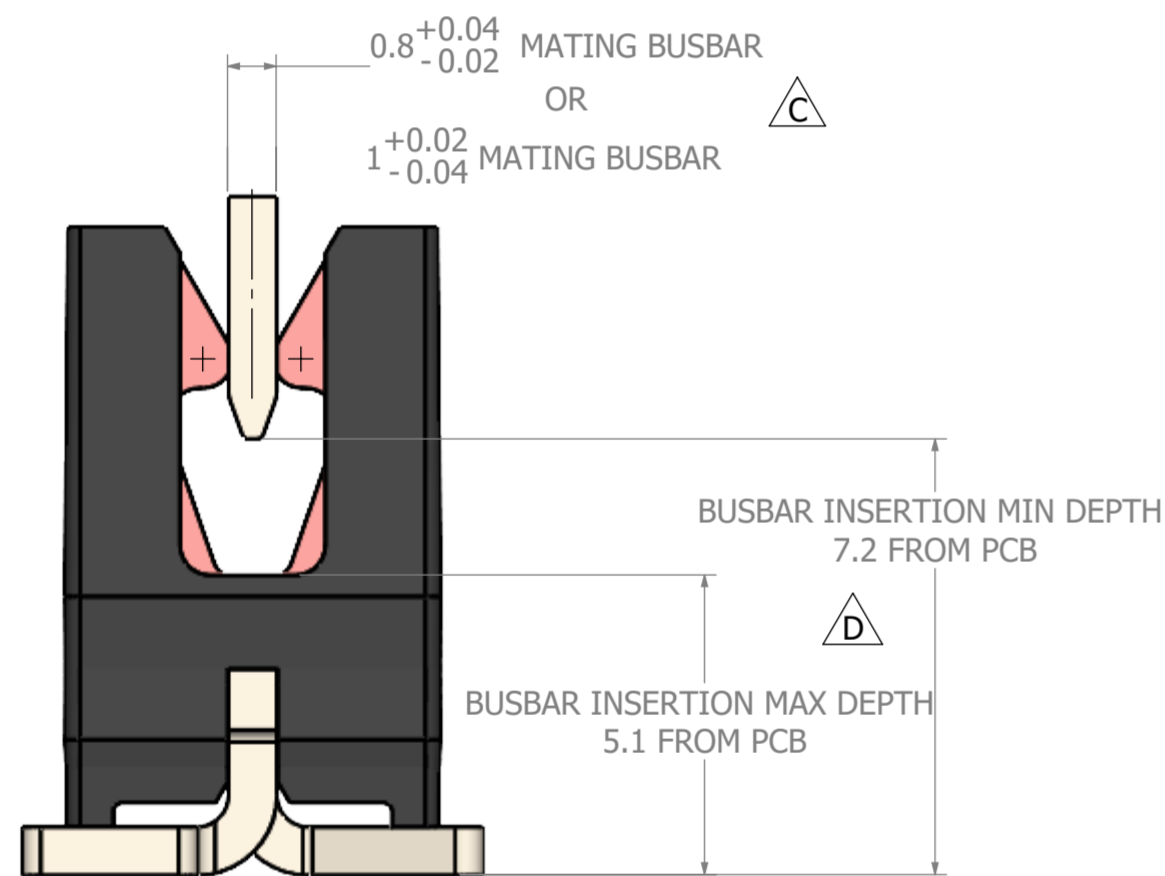
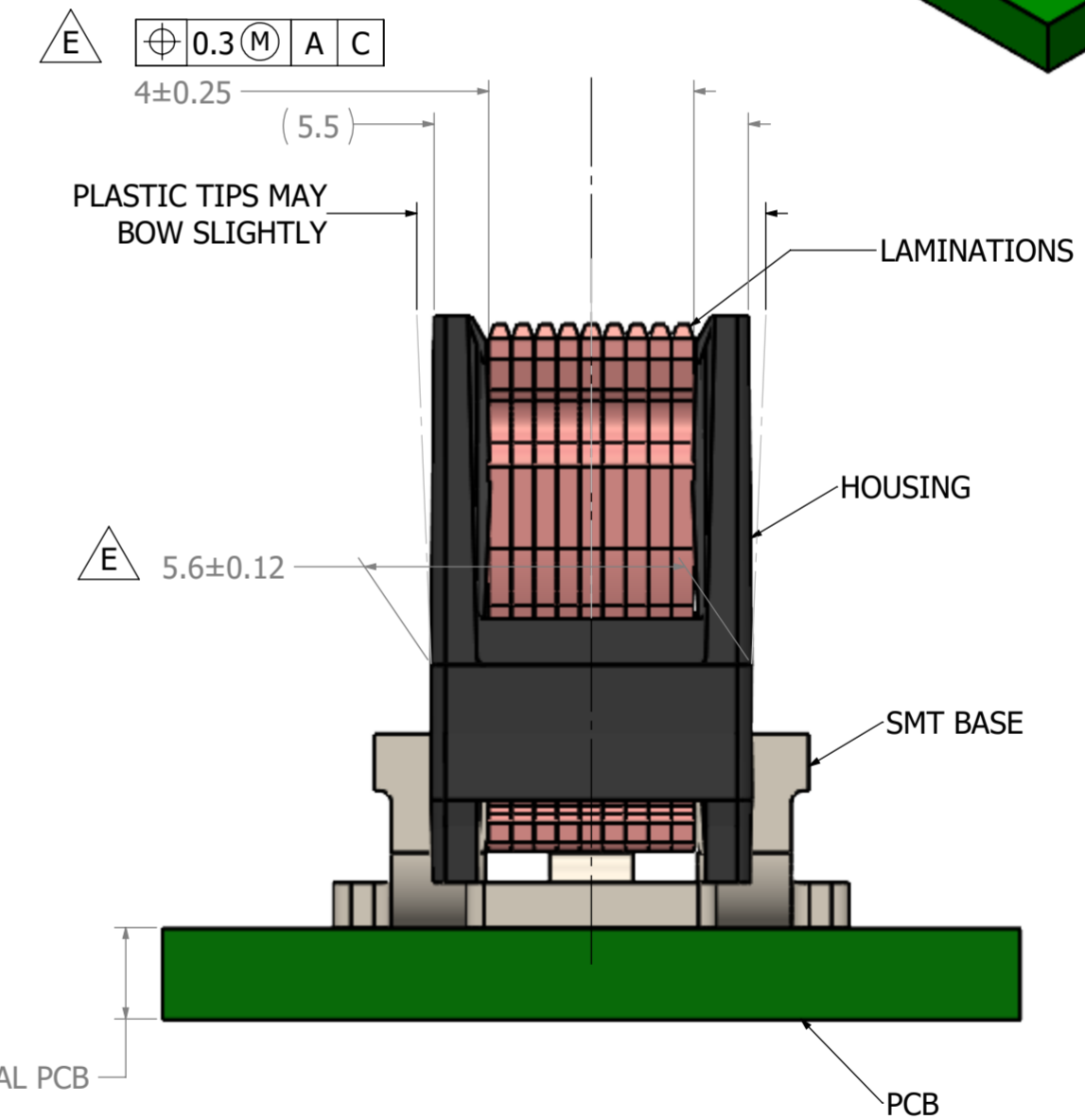
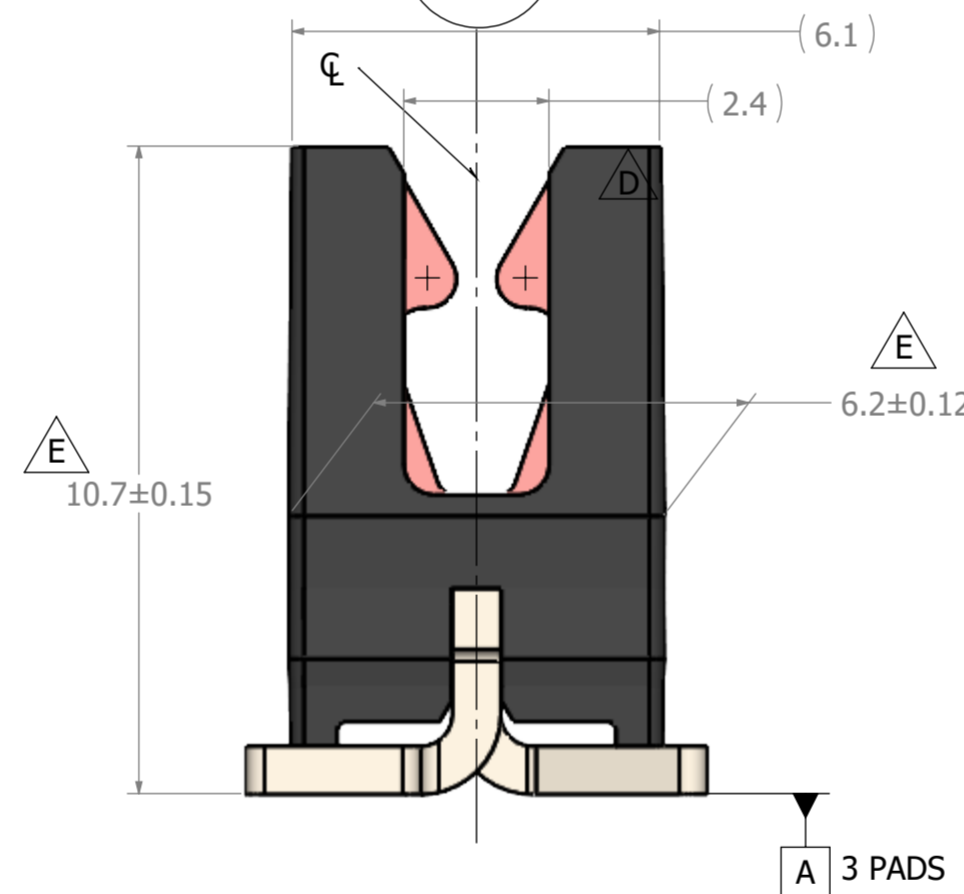
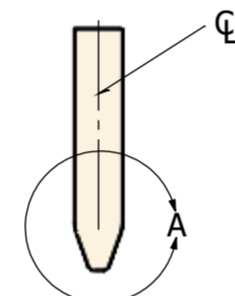
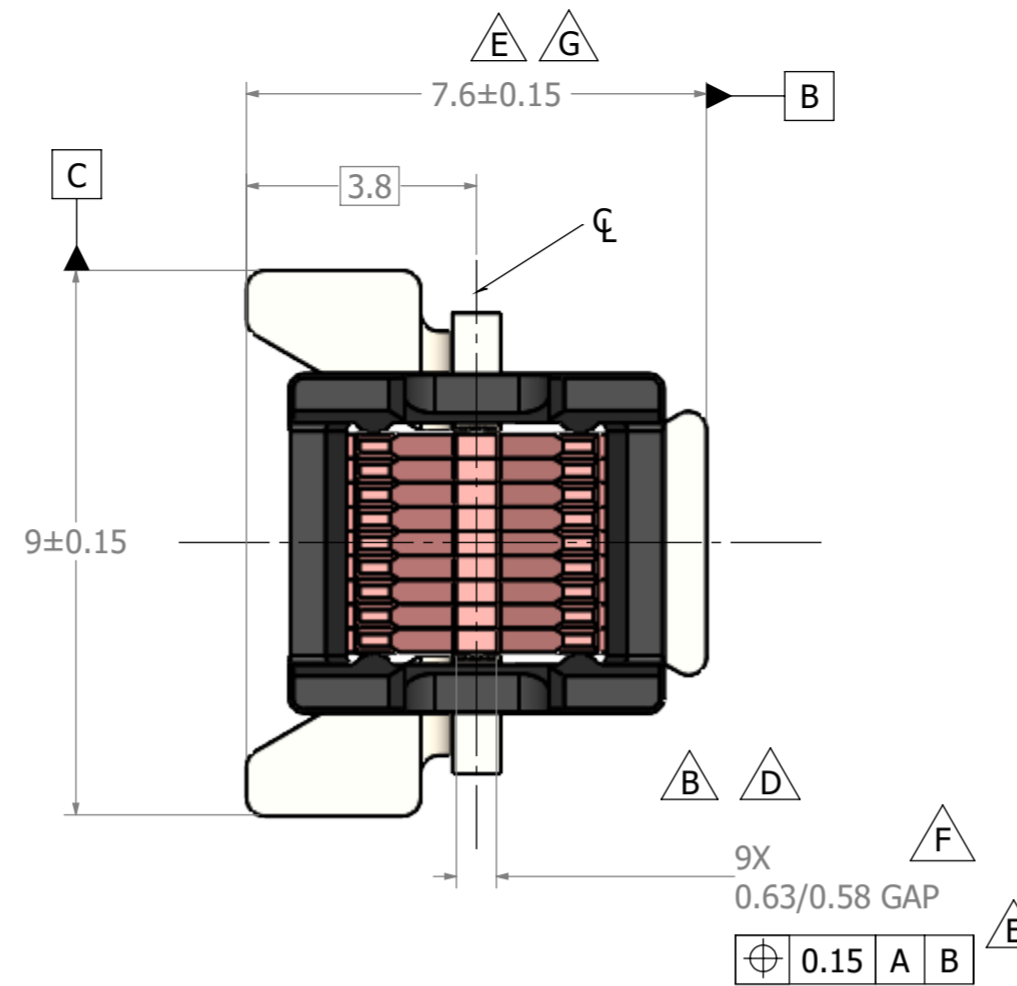
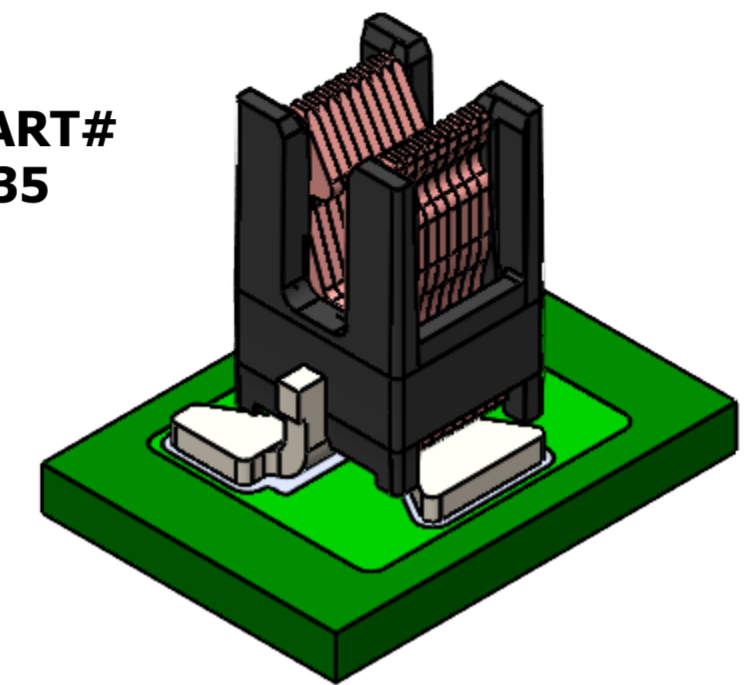


NOTES (UNLESS OTHERWISE NOTED):

- CONSTRUCTION:  
 STAMPINGS: CuNiSi (LAMINATIONS) & COPPER (SMT BASE)  
 HOUSING: GLASS-FILLED PPA  
 PLATING: POST-PLATED SILVER OVER SULFAMATE NICKEL (LAMINATIONS AND SMT BASE)
- TYPICAL ASSEMBLY FORCES FOR MATING BLADE INTO LAMINATIONS:  
 APPROXIMATELY 90N TYPICAL FOR 0.8mm BUSBAR  
 APPROXIMATELY 205N TYPICAL FOR 1.0mm BUSBAR  
 NOT APPROVED FOR USE OF 0.8mm BUSBAR AFTER INSERTION AND REMOVAL OF 1.0mm BUSBAR
- MATING CYCLES:  
 TESTED TO 3 CYCLES WITH CONTROLLED, REPEATABLE ASSEMBLY METHOD
- MAXIMUM ENVIRONMENTAL TEMPERATURE: 125°C
- SUGGESTED SOLDER MASK DEFINED SOLDER PAD IS OPTIMIZED FOR PART PLACEMENT AND ORIENTATION.
- COPPER PAD UNDER SOLDER MASK GEOMETRY ADJUSTABLE PER APPLICATION REQUIREMENTS.
- USERS MUST ALWAYS VALIDATE AND QUALIFY BusMate® IN THEIR OWN APPLICATION
- UNDER RARE CIRCUMSTANCES, A SHIFT IN THE LAMINATIONS MAY OCCUR. HOWEVER, SHIFT LESS THAN 0.55mm WILL NOT AFFECT THE INSERTION PROCESS. REALIGNMENT IF THE LAMINATION IS ALSO POSSIBLE WITHOUT DEGRADATION OF THE CONTACT SURFACE.

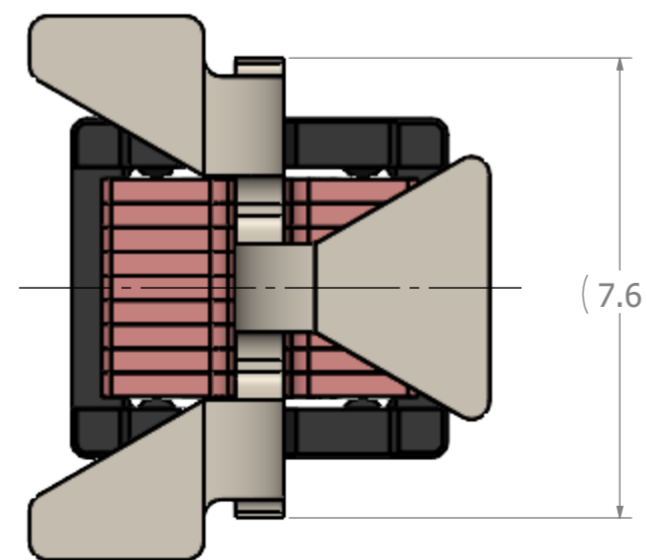
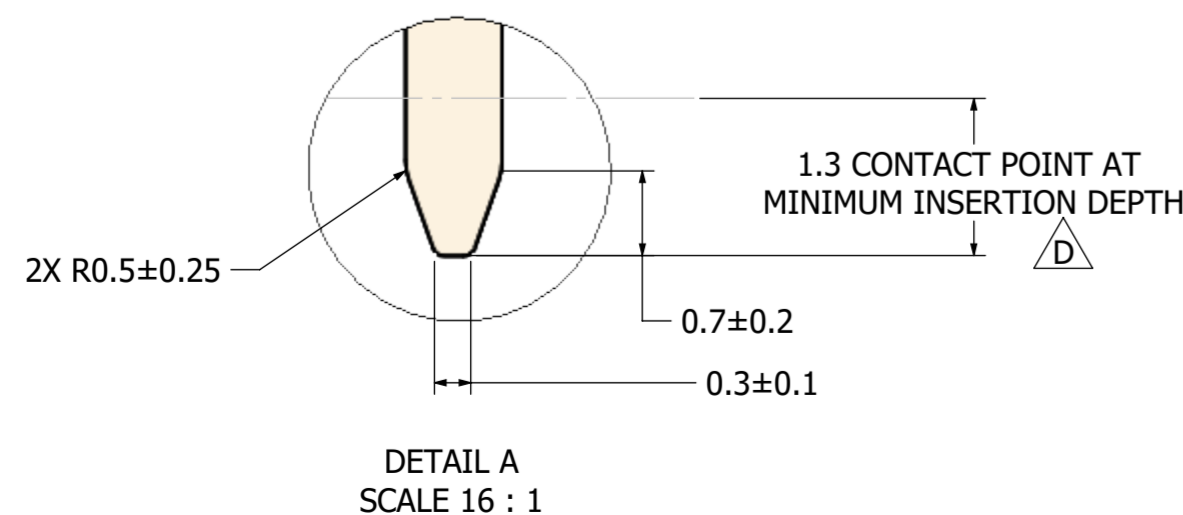
| REVISIONS |      |  |            |          |        |
|-----------|------|--|------------|----------|--------|
| ZONE      | REV. | DESCRIPTION  | DATE       | APPROVED | DCN    |
|           | A    | INITIAL RELEASE  | 12/17/2020 | GT       |        |
|           | B    | UPDATED SOLDER PAD, HOUSING WIDTH                            | 05/27/2021 | GT       | 202112 |
|           | C    | ADDED DETAILS FOR 1mm BUSBAR                                 | 9/2/2021   | GT       | 202113 |
|           | D    | REMOVED REDUNDANT DIMENSIONS                                 | 11/12/2021 | GT       | 202119 |
|           | E    | (7.6) WAS 7.60±0.15; (9) WAS 9.00±0.15; ADDED DATUMS A, B, C | 12/13/2022 | GT       | 202301 |
|           | F    | REMOVED REFERENCE INDICATION, 0.63/0.58 WAS (0.61)           | 1/26/2023  | GT       | 202302 |
|           | G    | 7.6±0.15 WAS (7.6); 9±0.15 WAS (9); ADDED GRIPPER IMAGE      | 8/4/2023   | GT       | 202311 |
|           | H    | UPDATED NOTE 2, ADDED NOTE 8                                 | 2/14/2024  |          |        |

**ENNOVI PART#  
IPX30035**



**MATING BUSBAR**

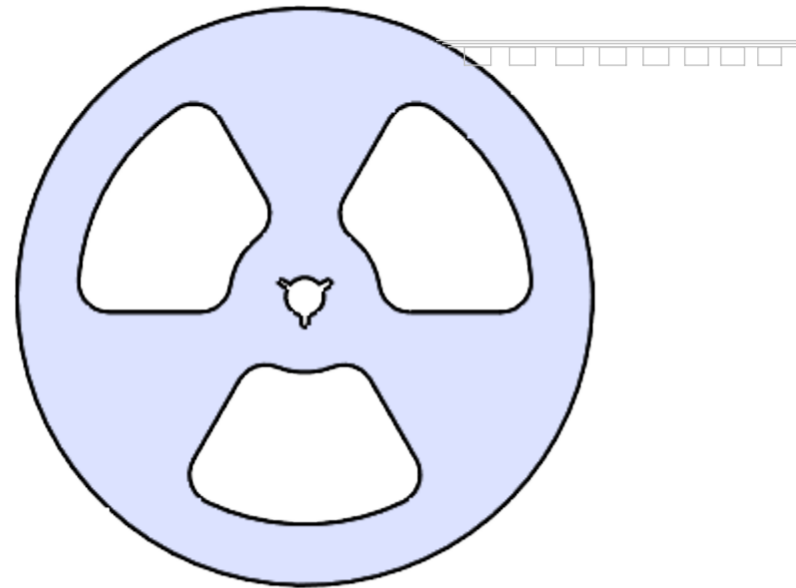
BUSBAR MATERIAL: COPPER / COPPER ALLOY, 1/2 HARD MIN RECOMMENDED  
 RECOMMENDED PLATING: Sn over Ni  
 RECOMMENDED BLADE WIDTH: 5.6mm MIN



UNLESS OTHERWISE SPECIFIED:  
 DIMENSIONS ARE IN MM  
 TOLERANCES:  
 .X ±.1  
 .XX ±.07  
 .XXX ±.03  
 ANGULAR: ±2°

|  |  |        |        |
|--|--|--------|--------|
| <b>ENNOVI™</b><br>TITLE: BusMate®, 9 LAM SMT<br>40-60 AMP, 0.8mm MATING BUSBAR |  | SCALE: | SIZE:  |
|  |  | 8:1    | A2     |
| DRAWING NO.: E-IPX30035  |  | REV:   | SHEET: |
|  |  | H      | 1 / 2  |

## REEL PACKAGING

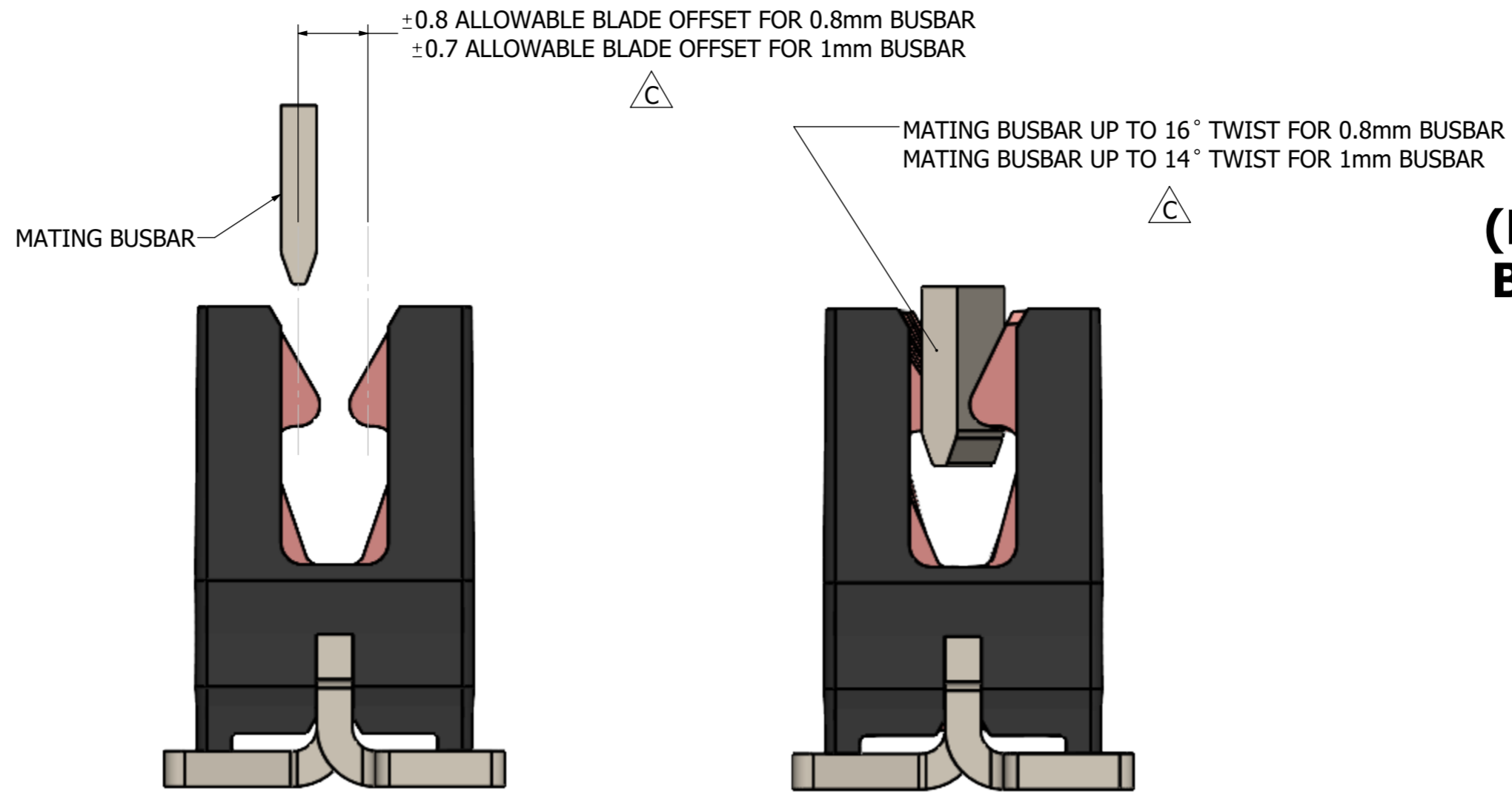
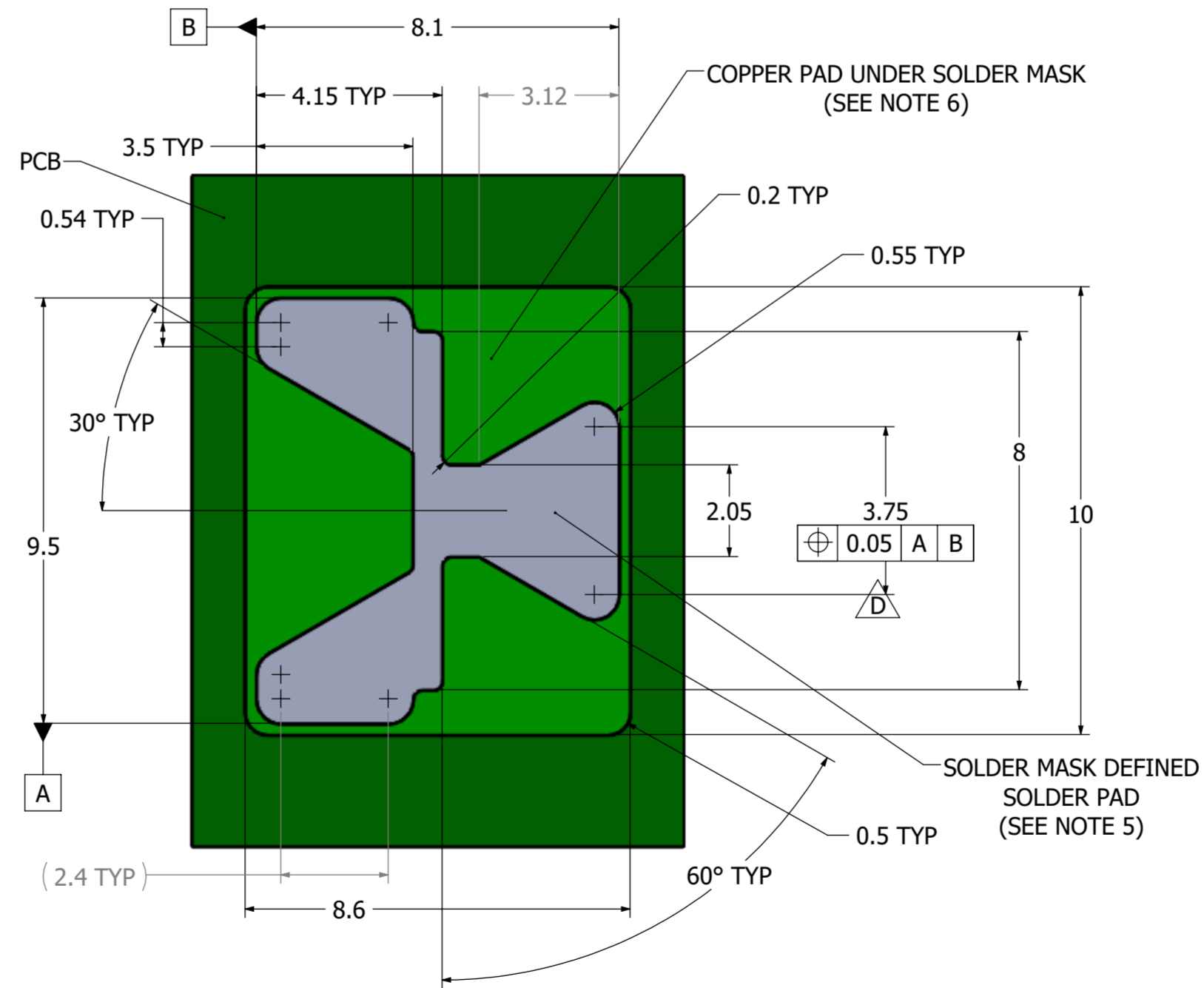


REEL DIAMETER: 380mm (15")  
 TAPE WIDTH: 24mm  
 PART PITCH: 16mm  
 QTY PER REEL: 520 PCS  $\triangle B$

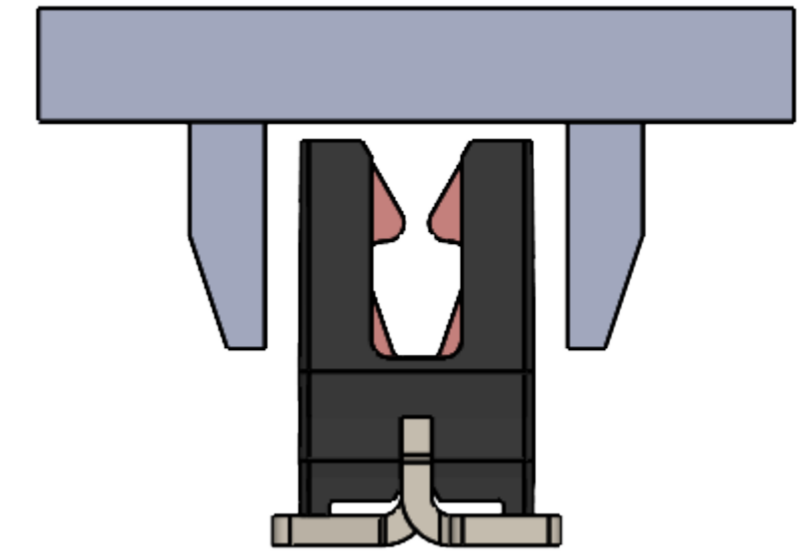
(TRAY PACKAGING ALSO AVAILABLE)

## SUGGESTED SOLDER MASK DEFINED SOLDER PAD AND COPPER PAD UNDER SOLDER MASK LAYOUT $\triangle B$

RECOMMEND: SAC305 SOLDER PASTE, 5 Mil THICK

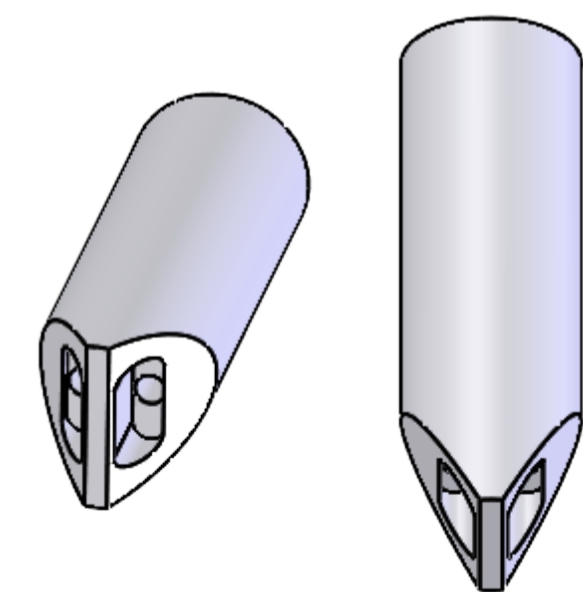


## GRIPPER GEOMETRY (RECOMMENDED/PREFERRED BUSMATE PICKING METHOD)



PREFERRED ORIENTATION GRIPPERS MUST BE PARALLEL TO H-CONTACT GAP AS SHOWN

## VACUUM NOZZLE TIP GEOMETRY



CONSULT ENNOVI FOR VENDOR INFORMATION

UNLESS OTHERWISE SPECIFIED:  
 DIMENSIONS ARE IN MM  
 TOLERANCES:  
 .X ±.1  
 .XX ±.07  
 .XXX ±.03  
 ANGULAR: ±2°

**ENNOVI™**

|              |   |        |     |        |       |
|--------------|---|--------|-----|--------|-------|
| TITLE:       | BusMate®, 9 LAM SMT<br>40-60 AMP, 0.8mm MATING BUSBAR | SCALE: | 8:1 | SIZE:  | A2    |
| DRAWING NO.: | E-IPX30035  | REV.:  | H   | SHEET: | 2 / 2 |