

NOTES (UNLESS OTHERWISE NOTED):

1. CONSTRUCTION:

STAMPINGS: CuNiSi (LAMINATIONS) & COPPER (SMT BASE)

HOUSING: GLASS-FILLED PPA

PLATING: POST-PLATED SILVER OVER SULFAMATE NICKEL (LAMINATIONS AND SMT BASE)

2. TYPICAL ASSEMBLY FORCES FOR MATING BLADE INTO LAMINATIONS:

APPROXIMATELY 135N TYPICAL FOR 0.8mm BUSBAR $\triangle G$

3. MATING CYCLES:

TESTED TO 3 CYCLES WITH CONTROLLED, REPEATABLE ASSEMBLY METHOD

4. MAXIMUM ENVIRONMENTAL TEMPERATURE: 125°C

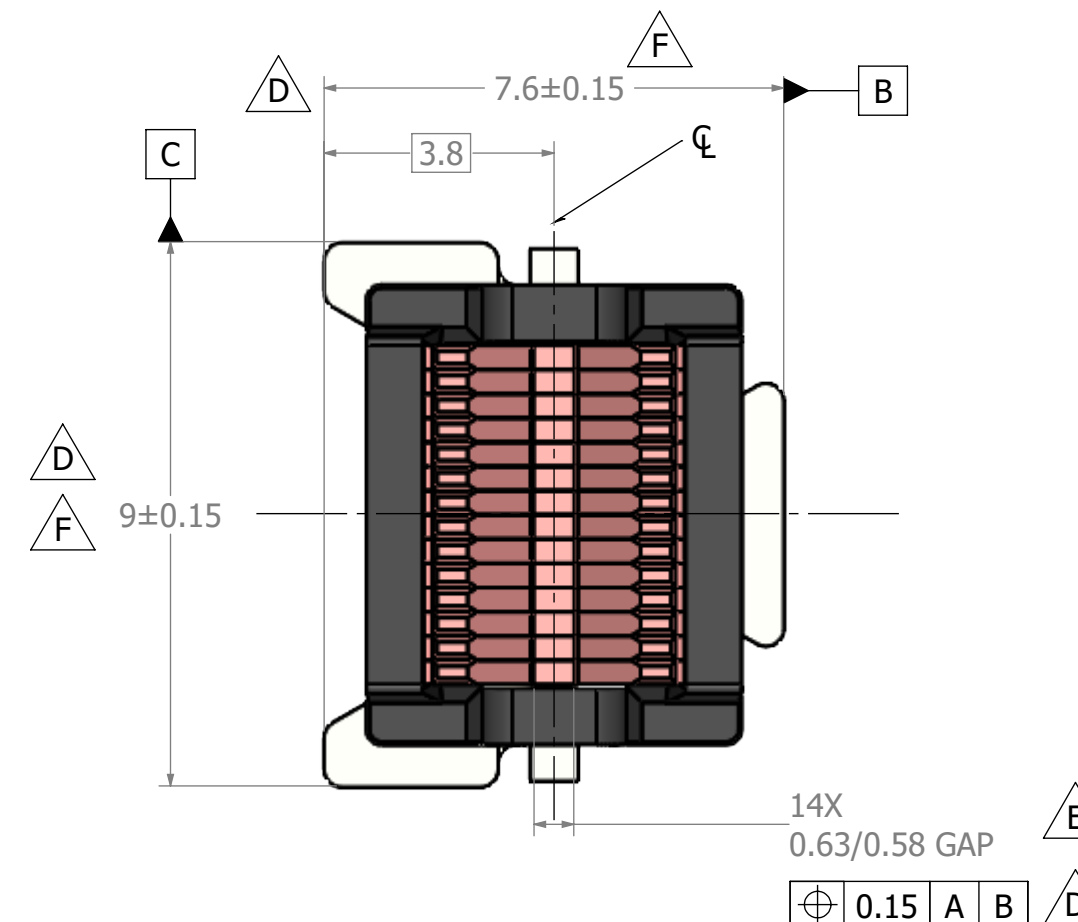
5. SUGGESTED SOLDER MASK DEFINED SOLDER PAD IS OPTIMIZED FOR PART PLACEMENT AND ORIENTATION.

6. COPPER PAD UNDER SOLDER MASK GEOMETRY ADJUSTABLE PER APPLICATION REQUIREMENTS.

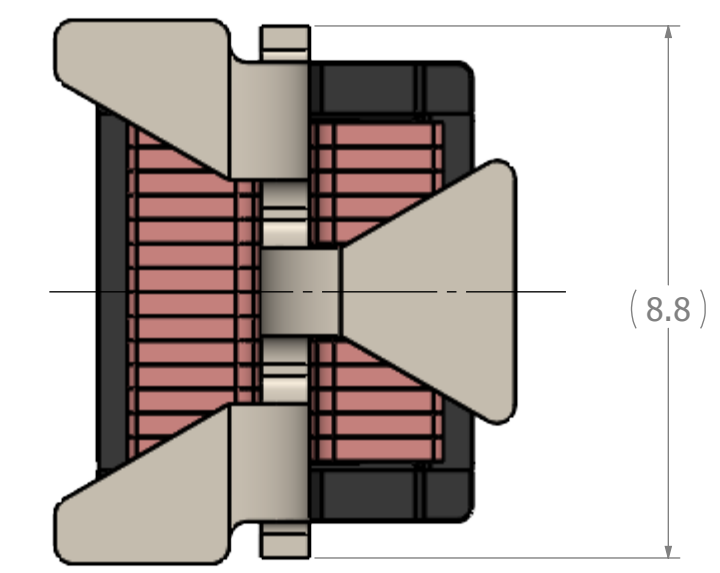
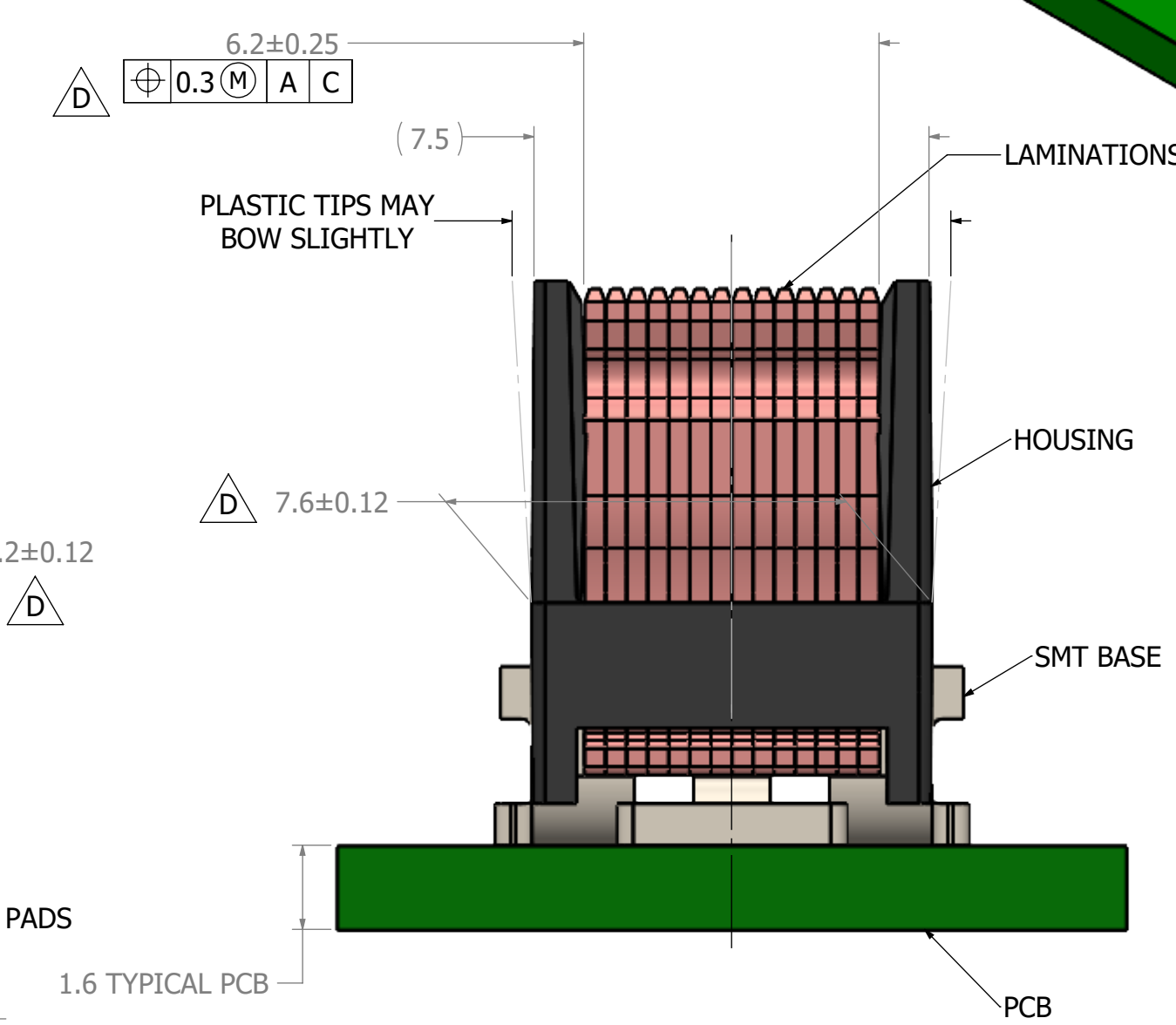
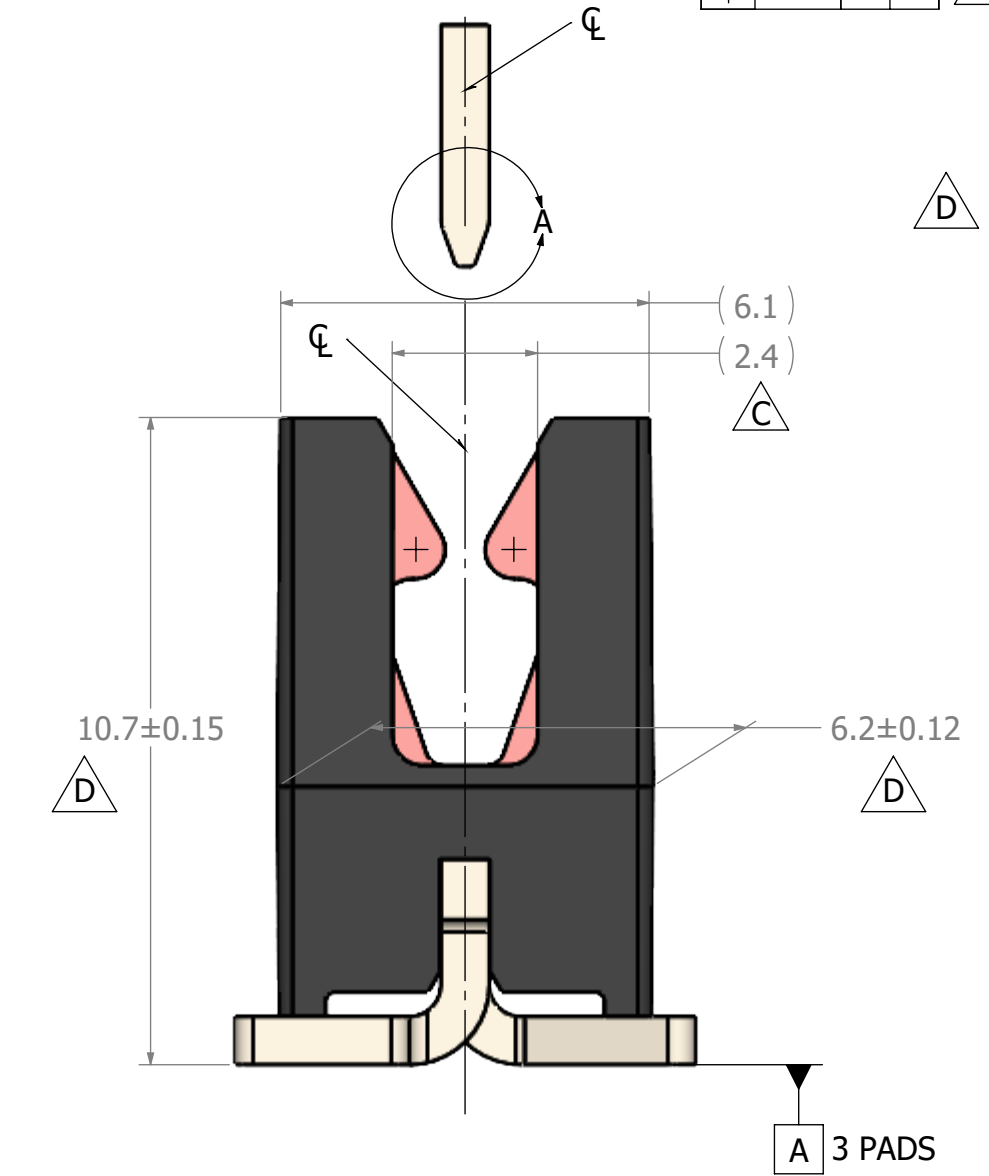
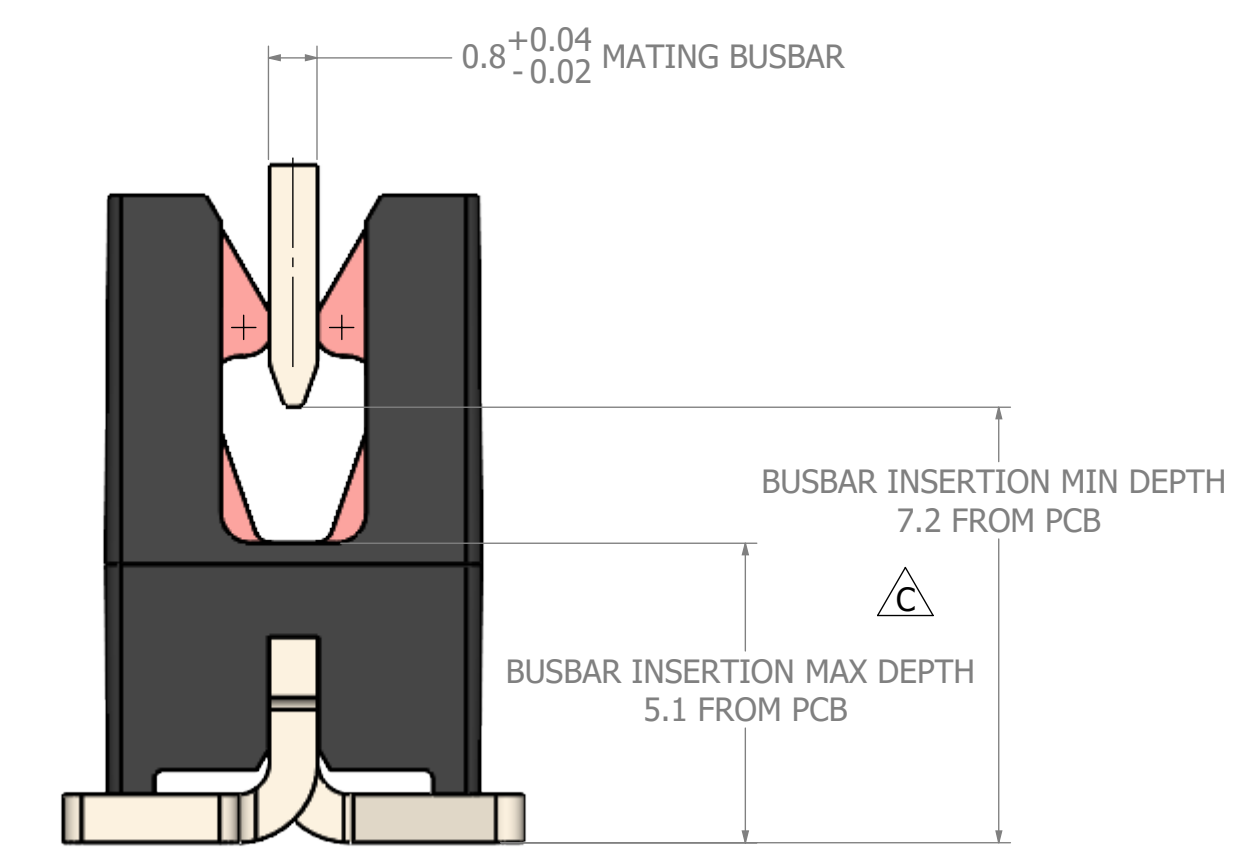
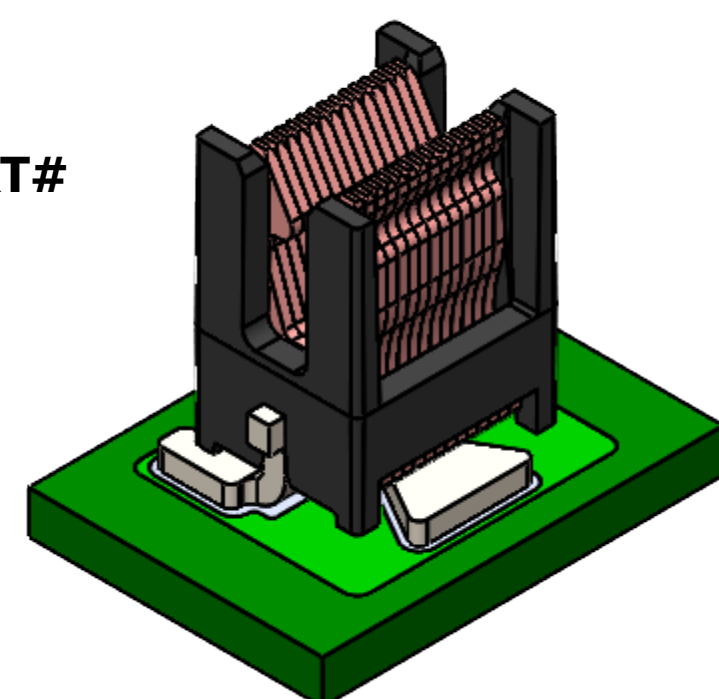
7. USERS MUST ALWAYS VALIDATE AND QUALIFY BusMate® IN THEIR OWN APPLICATION

8. UNDER RARE CIRCUMSTANCES, A SHIFT IN THE LAMINATIONS MAY OCCUR. HOWEVER, SHIFT LESS THAN 0.55mm WILL NOT AFFECT THE INSERTION PROCESS. REALIGNMENT IF THE LAMINATION IS ALSO POSSIBLE WITHOUT DEGRADATION OF THE CONTACT SURFACE. $\triangle G$

REVISIONS					
ZONE	REV.	DESCRIPTION	DATE	APPROVED	DCN
	A	INITIAL RELEASE	05/27/2021	GT	202112
	B	CORRECTED BUSBAR BLADE WIDTH, INSERTION FORCE	9/2/2021	GT	202113
	C	REMOVED REDUNDANT DIMENSIONS	11/12/2021	GT	202119
	D	(7.6) WAS 7.60±0.15; (9) WAS 9.00±0.15; ADDED DATUMS A,B,C	12/13/2022	GT	202301
	E	REMOVED REFERENCE INDICATION, 0.63/0.58 WAS (0.61)	1/26/2023	GT	202302
	F	7.6±0.15 WAS (7.6); 9±0.15 WAS (9); ADDED GRIPPER IMAGE	8/4/2023	GT	202311
	G	UPDATED NOTE 2, ADDED NOTE 8	2/13/2024		

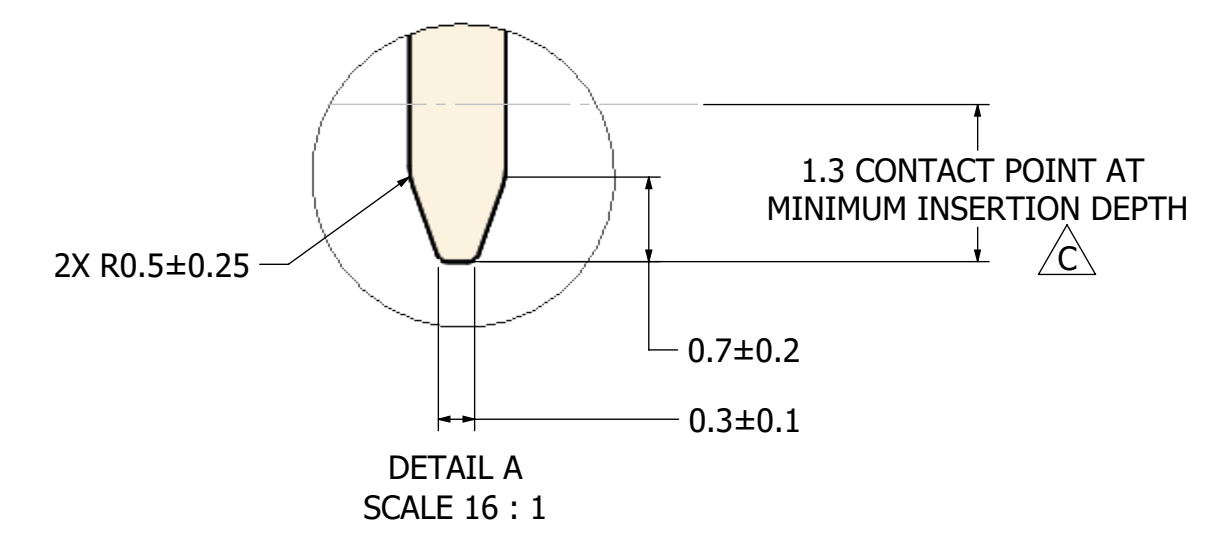


**ENNOVI PART#
IPX30055**



MATING BUSBAR

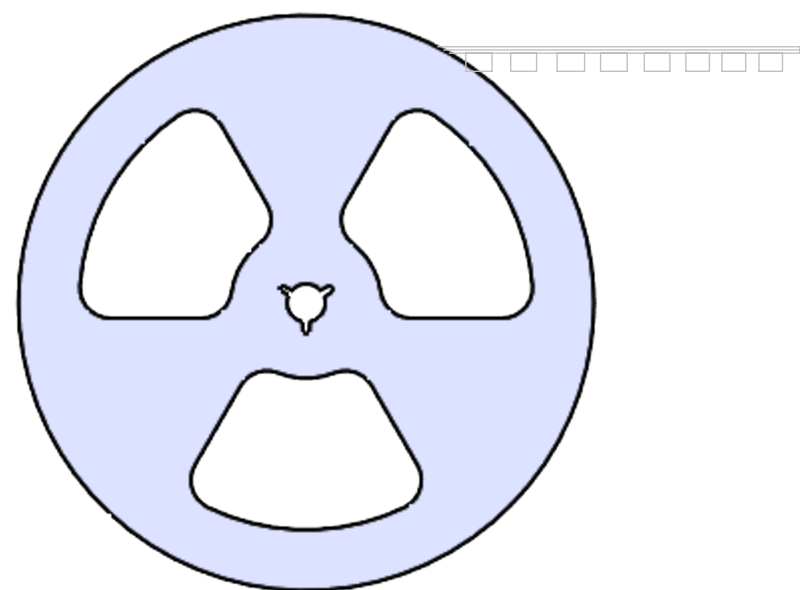
BUSBAR MATERIAL: COPPER / COPPER ALLOY, 1/2 HARD MIN RECOMMENDED
RECOMMENDED PLATING: Sn over Ni
RECOMMENDED BLADE WIDTH: 7.6mm MIN $\triangle B$



UNLESS OTHERWISE SPECIFIED:
DIMENSIONS ARE IN MM
TOLERANCES:
.X ±.1
.XX ±.07
.XXX ±.03
ANGULAR: ±2°

ENNOVI™ TITLE: BusMate®, 14 LAM SMT 60-80 AMP, 0.8mm MATING BUSBAR		SCALE:	SIZE:
		8:1	A2
DRAWING NO.: E-IPX30055		REV:	SHEET:
		G	1 / 2

REEL PACKAGING

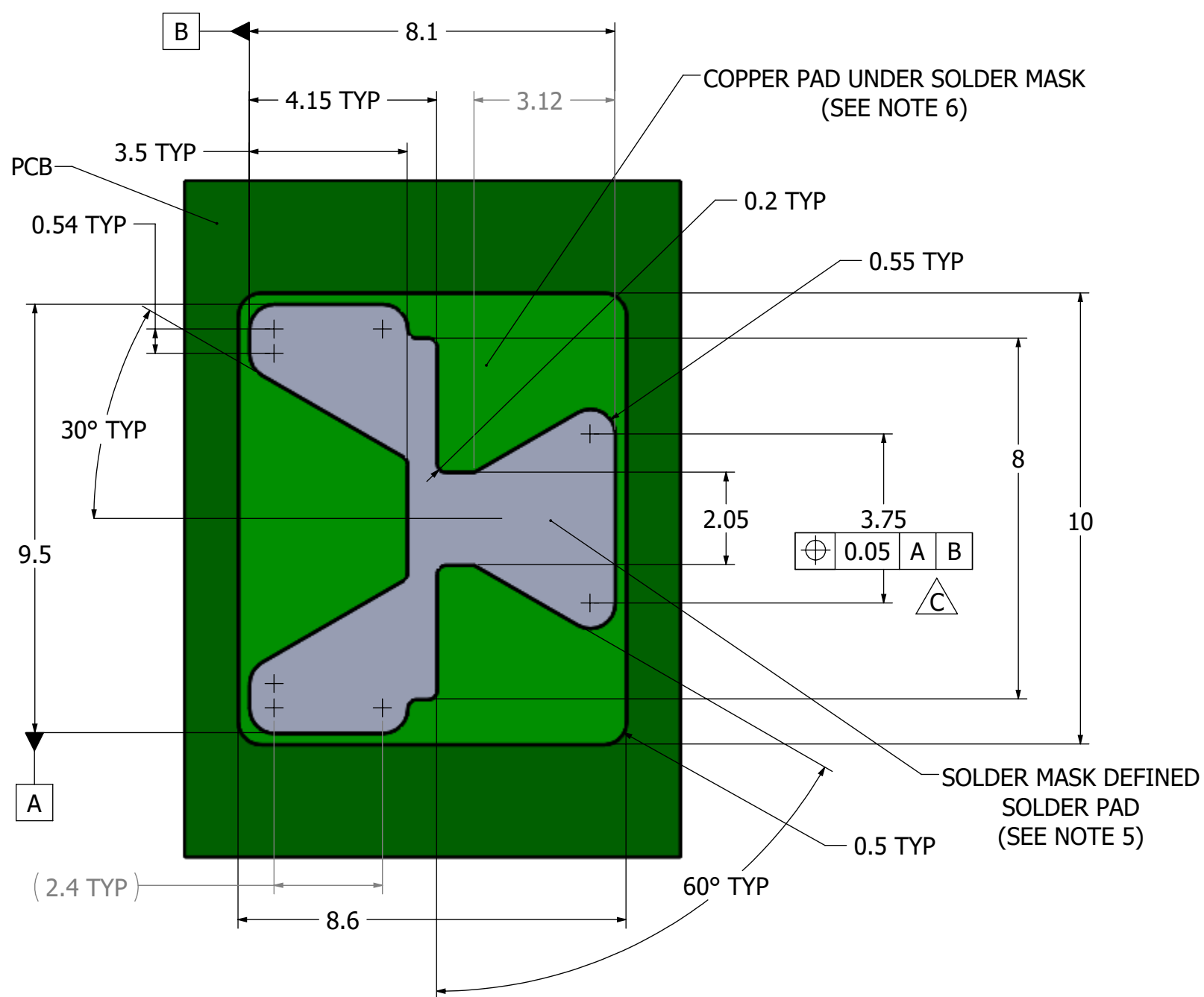


REEL DIAMETER: 380mm (15")
 TAPE WIDTH: 24mm
 PART PITCH: 16mm
 QTY PER REEL: 520 PCS

(TRAY PACKAGING ALSO AVAILABLE)

SUGGESTED SOLDER MASK DEFINED SOLDER PAD AND COPPER PAD UNDER SOLDER MASK LAYOUT

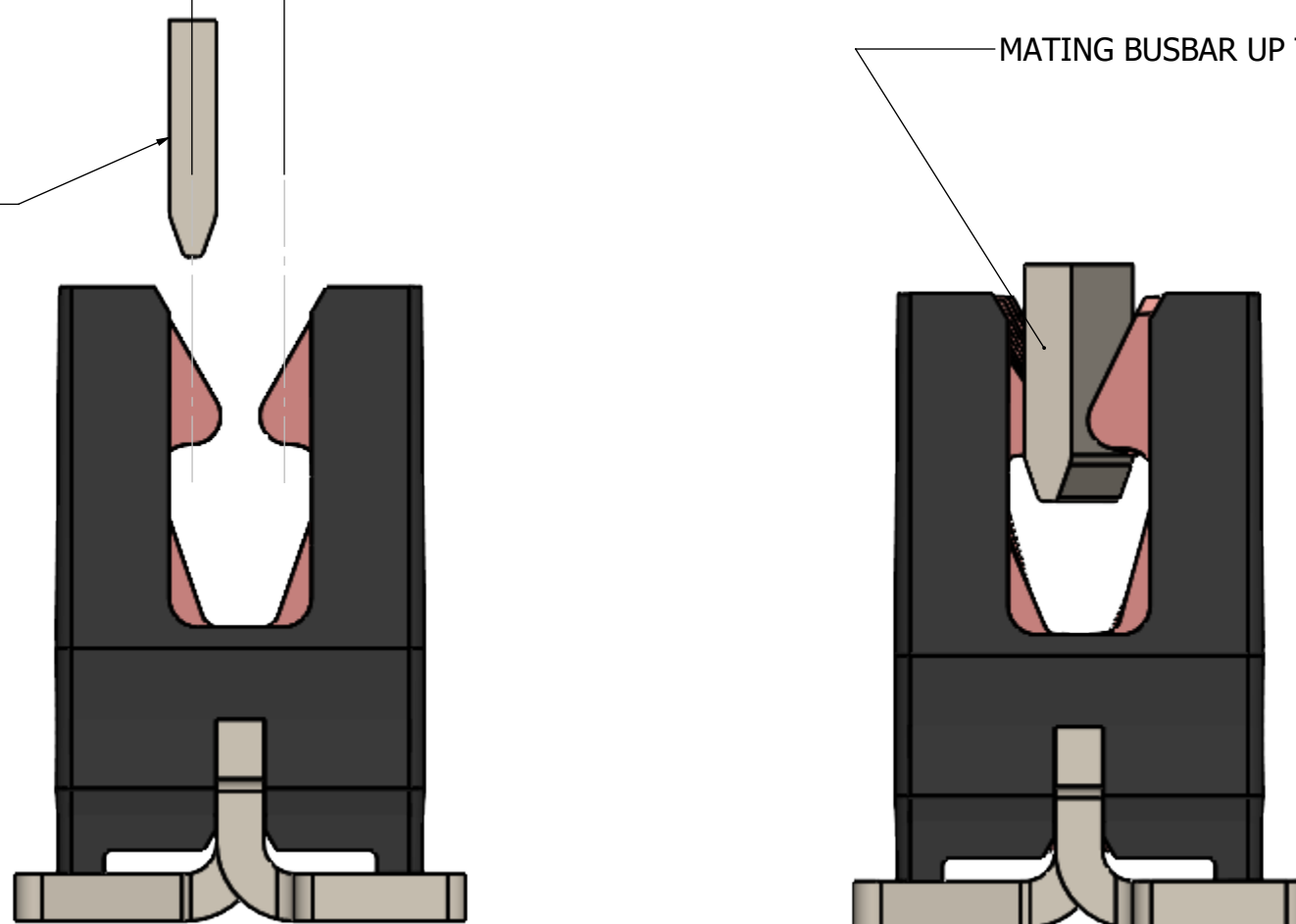
RECOMMEND: SAC305 SOLDER PASTE, 5 Mil THICK



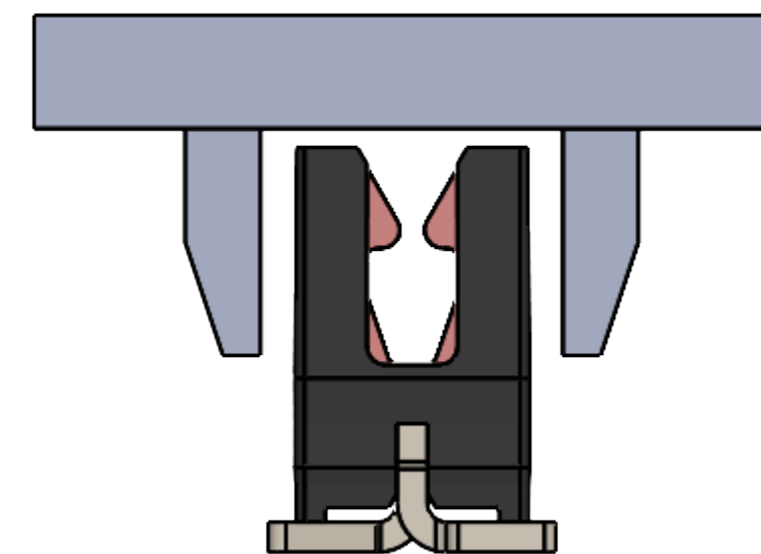
±0.8 ALLOWABLE BLADE OFFSET FOR 0.8mm BUSBAR

MATING BUSBAR

MATING BUSBAR UP TO 12° TWIST FOR 0.8mm BUSBAR

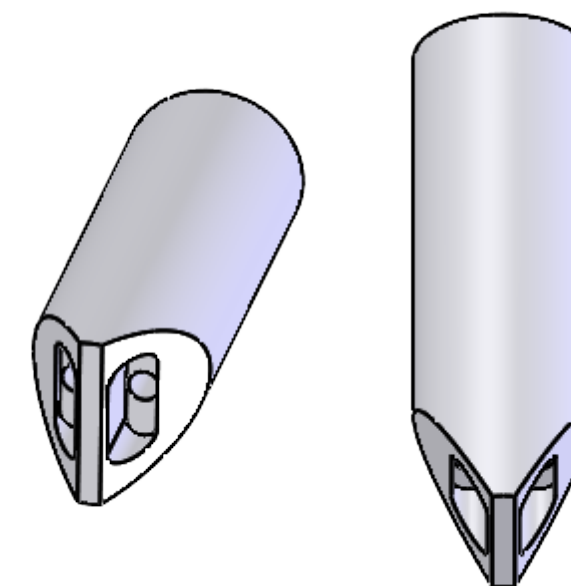


GRIPPER GEOMETRY (RECOMMENDED/PREFERRED BUSMATE PICKING METHOD)



PREFERRED ORIENTATION GRIPPERS MUST BE PARALLEL TO H-CONTACT GAP AS SHOWN

VACUUM NOZZLE TIP GEOMETRY



CONSULT ENNOVI FOR VENDOR INFORMATION

UNLESS OTHERWISE SPECIFIED:
 DIMENSIONS ARE IN MM
 TOLERANCES:
 .X ±.1
 .XX ±.07
 .XXX ±.03
 ANGULAR: ±2°

ENNOVI™

TITLE:	BusMate®, 14 LAM SMT	SCALE:	8:1	SIZE:	A2
	60-80 AMP, 0.8mm MATING BUSBAR				
DRAWING NO.:	E-IPX30055	REV.:	G	SHEET:	2 / 2