

Certificate CN19/42020

The management system of

# Interplex (Suzhou) Precision Engineering Ltd. Technical Center Branch

No. 21, Louyang Road, Suzhou Industrial Park, Suzhou City, Jiangsu Province, 215122, P.R. China

has been assessed and certified as meeting the requirements of



## ISO 13485:2016 EN ISO 13485:2016

For the following activities

**Design and Development of Medical Carts and Sheet Metal Parts used for Active Medical Devices (Non-implantable), Manufacture and Distribution of Medical Carts, Mainframe Boxes (without CPU and Software) and Sheet Metal Parts used for Active Medical Devices (Non-implantable)**

This certificate is valid from 24 February 2022 until 23 February 2025 and remains valid subject to satisfactory surveillance audits. Recertification audit due a minimum of 60 days before the expiration date Issue 2. Certified since 24 February 2019

Authorised by

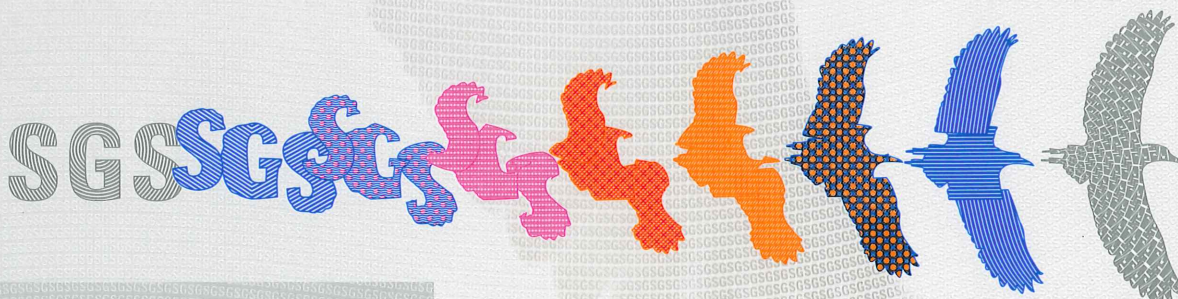


0005

SGS United Kingdom Ltd  
Rossmore Business Park Ellesmere Port Cheshire CH65 3EN UK  
t +44 (0)151 350-6666 f +44 (0)151 350-6600 [www.sgs.com](http://www.sgs.com)

21HC 13485 2016 0421

Page 1 of 1



This document is issued by the Company subject to its General Conditions of Certification Services accessible at [www.sgs.com/terms\\_and\\_conditions.htm](http://www.sgs.com/terms_and_conditions.htm). Attention is drawn to the limitations of liability, indemnification and jurisdictional issues established therein. The authenticity of this document may be verified at <http://www.sgs.com/en/certified-clients-and-products/certified-client-directory>. Any unauthorized alteration, forgery or falsification of the content or appearance of this document is unlawful and offenders may be prosecuted to the fullest extent of the law.