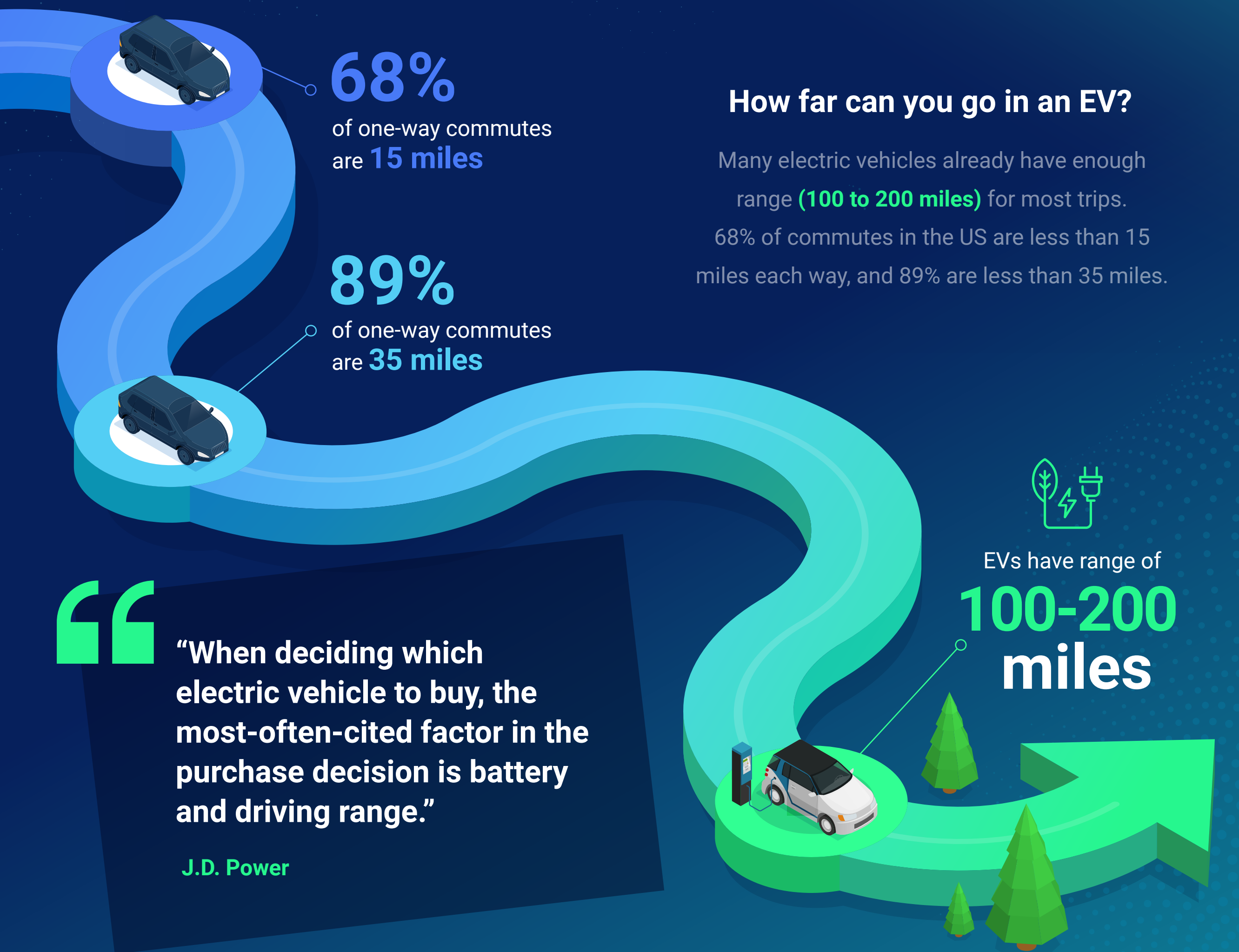
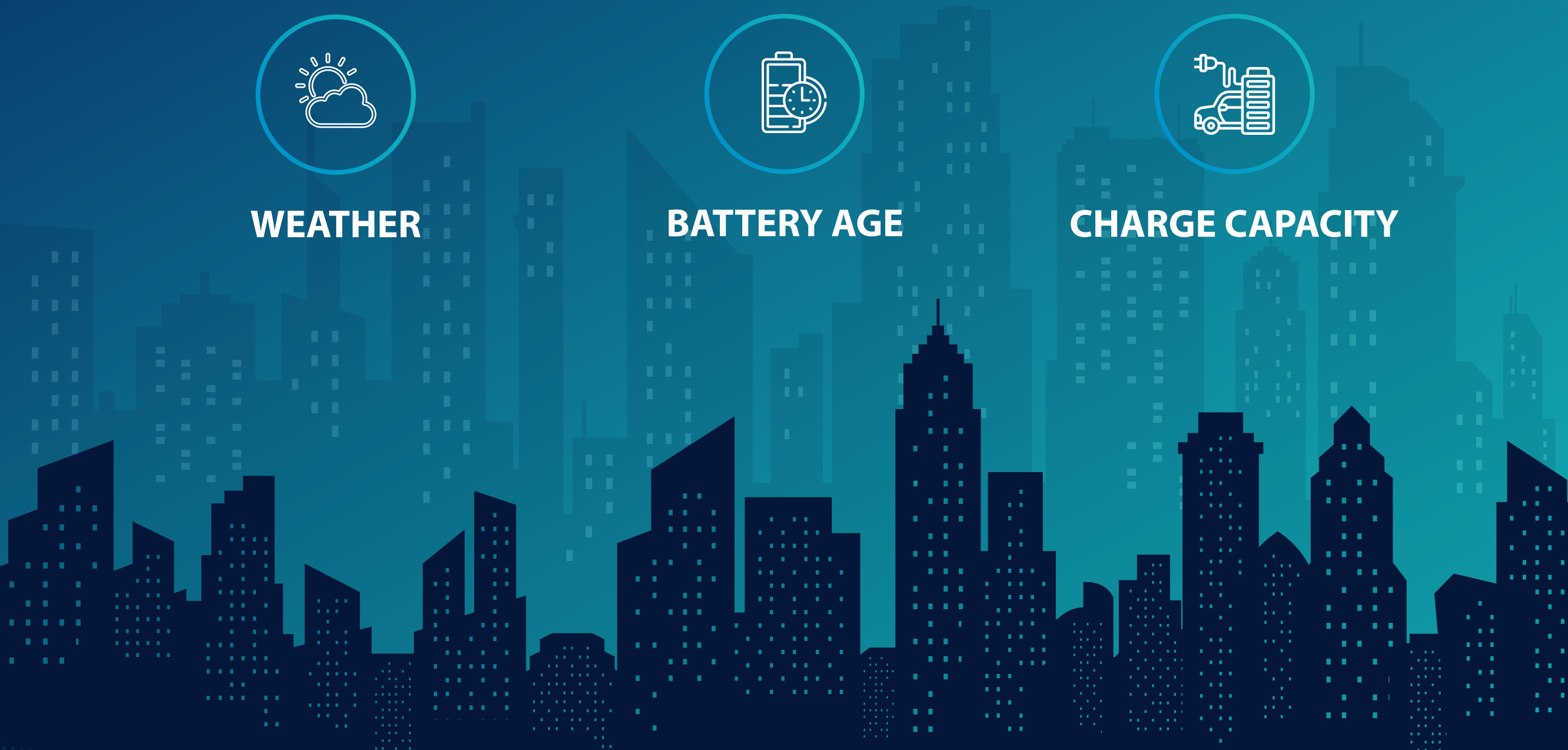


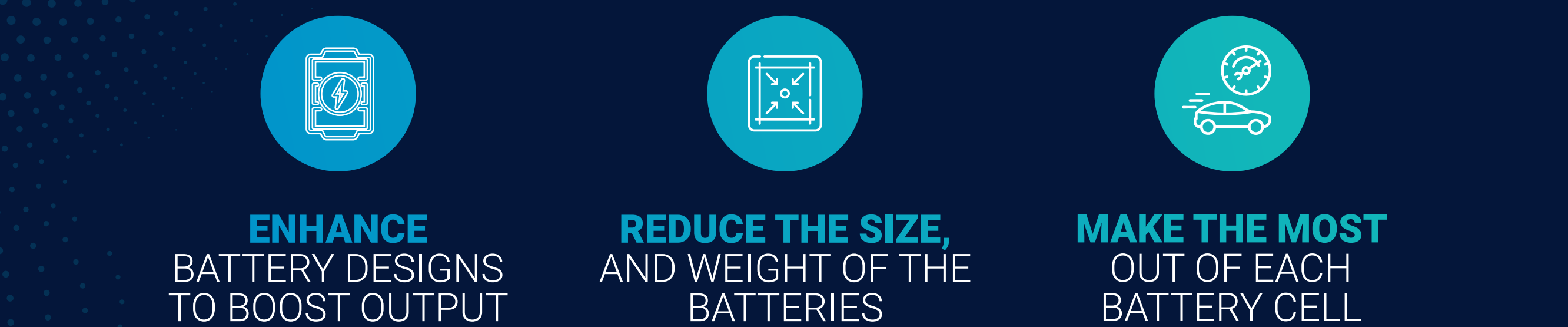
# "RANGE ANXIETY"



## WHAT IMPACTS RANGE?

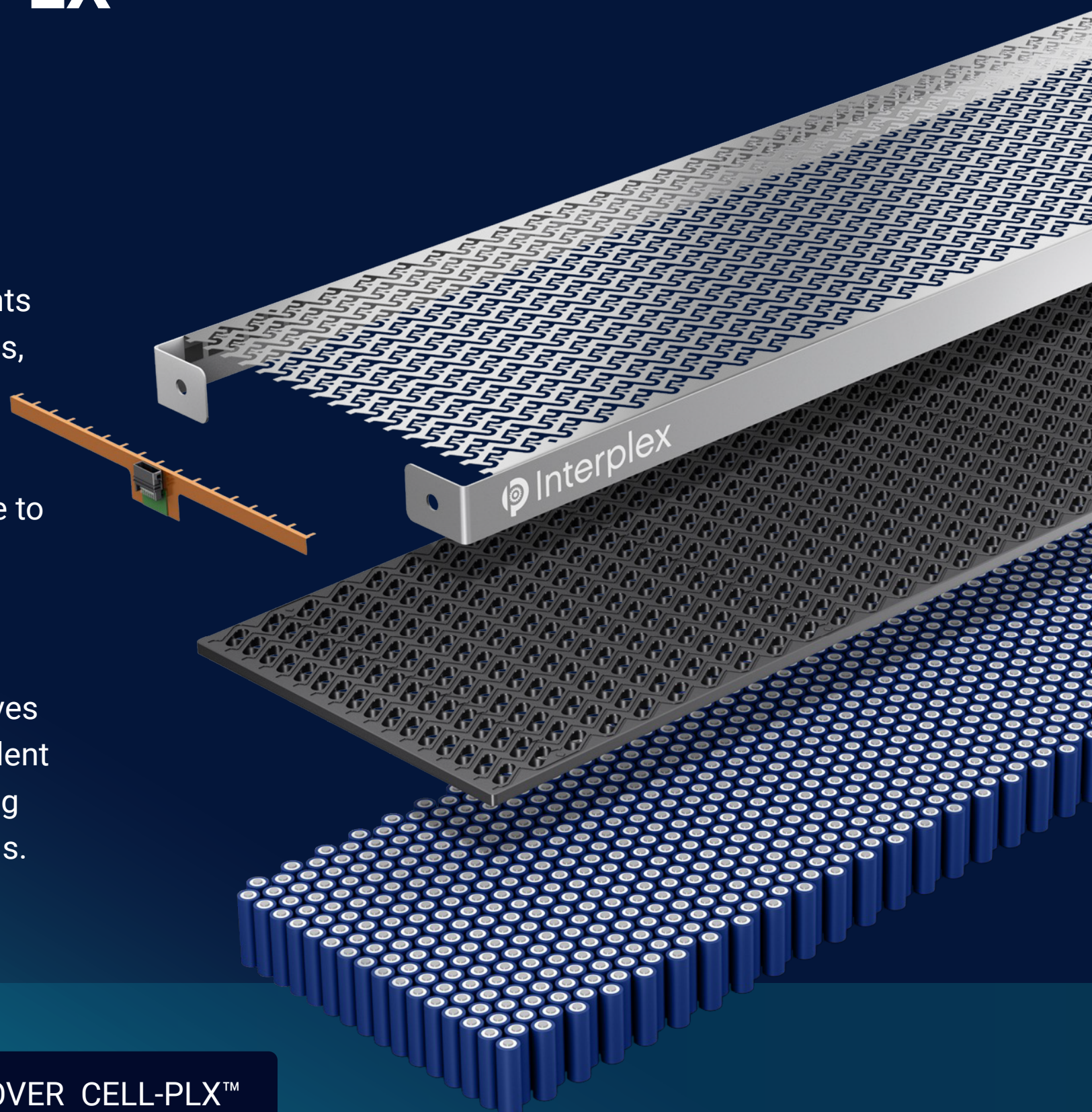


## TIPS TO EXTEND EV RANGE WITH IMPROVED BATTERY TECHNOLOGIES



## HOW DOES CELL-PLX™ ADDRESS THESE CHALLENGES?

- ✓ Handle design-specific requirements for aluminum, performance plastics, dielectric layers and more.
- ✓ Thin, lightweight and customizable to meet any power output and configuration requirements.
- ✓ Interplex U-Turn technology improves battery lifespan by achieving excellent current density spread and reducing stress on the individual battery cells.



FOR MORE INFORMATION

DISCOVER CELL-PLX™