

Need a custom  
solution?

CONTACT US



# Solder Bearing Lead (SBL) Technology

ENNOVI SBL Technology delivers perfect, consistent solder joints in one step, eliminating variability, rework, and rejects common with traditional soldering. This results in 100% solderability and superior joint consistency.

# ENNOVI™

## PROVEN RELIABILITY UNDER HARSH CONDITIONS



Engineered to withstand thermal stress, vibration, and environmental challenges, our flux cored solder preform creates a perfect mechanical and electrical solder joint every time.

## PERFECT SOLDER JOINTS WITH CLAW-SHAPED EDGE CLIP



Pre-applied solder and flux ensure precise, repeatable joints with zero variability, eliminating cold joints, voids, and costly rework.

## ONE-STEP ASSEMBLY FOR HIGHER EFFICIENCY



Streamlines the soldering process into a single step, eliminating the need for solder paste, solder dipping or secondary flux.

## APPLICATIONS

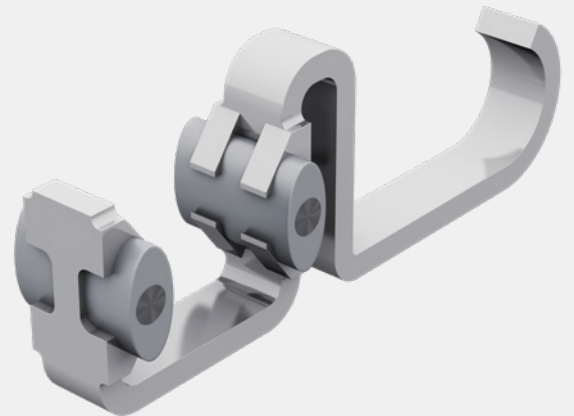
+ Interconnect and assembly in hybrid circuits, sub-assembly stacks, control units, sensors, shield assemblies, lead frames, PCBs and flex circuits.

## MARKETS

+ Aerospace  
+ Automotive  
+ Industrial  
+ Medical  
+ Telecommunications

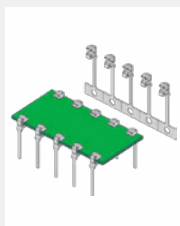
## SOLDER BEARING LEADS TECHNOLOGY

- + **One step assembly:** Lead can be simply pushed onto a substrate and reflowed.
- + **100% solderability:** Unique ENNOVI "claw" type leads permit direct contact between the solder and conductor pad, making unsoldered joints virtually non-existent.
- + **Easy, automated assembly:** One operator or machine, with one process can complete the entire pin-to-substrate assembly.
- + **Adaptability to safe, local heating:** ENNOVI leads can be bonded to pads without raising the temperature of the boards to the reflow point, greatly reducing the chances of damaging prepopulated components.
- + **Ability for continuous reflow**
- + **Elimination of thermal mismatch and vibration failure**
- + **Versatility:** Available in many different solder types, with varying melting points, and with any type of flux. Allows great flexibility in stacked and compound soldering operations.
- + **Fast, easy conversion:** No significant capital investment or specialized labor skills required.
- + **Significantly reduced product costs:** Fast, reliable solution for attaching leads to hybrid and PCB circuits — higher quality products, lower overall cost.

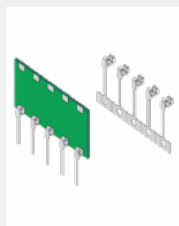


## PRODUCT TYPES

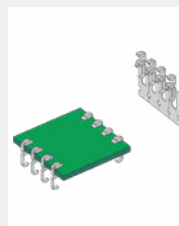
Dual Inline Package



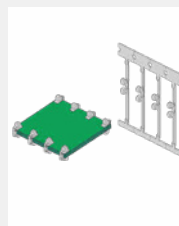
Single Inline Package



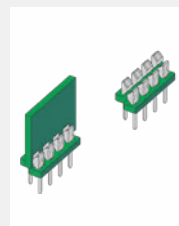
Surface Mount Package



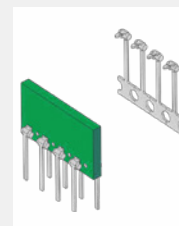
Shorting Clip



Dual Row Interconnect



Through Hole Interconnect



Special Interconnect

